

# Focus on: Chronic Kidney Disease

## March is National Kidney Month

### QUICK FACTS

- There are currently 26 million Americans with chronic kidney disease (CKD).<sup>1</sup>
- According to the Centers for Disease Control and Prevention, approximately 39.4% of individuals age 60 and older in the United States have CKD.<sup>2</sup>
  - Up to 40% of diabetic patients have CKD with early stage disease Stage I and Stage II.
- Diabetes and hypertension are the most common causes of ESRD with 49,224 and 29,662 new cases in 2006 respectively.<sup>3</sup>
- In 2006, there were over 87,000 deaths among individuals undergoing treatment for ESRD among U.S. residents. In the same year, over 500,000 U.S. residents received treatment for ESRD, with the total cost of the ESRD program exceeding \$33 billion.<sup>3</sup>
- CKD has a disproportionate impact on minority populations, especially African-Americans who have a four times greater risk than white Americans.<sup>3</sup>
- Up to 74% of CKD cases are under-diagnosed mainly due to lack of early stage identification.<sup>4</sup>



### Tools and Resources Available through Ingenix

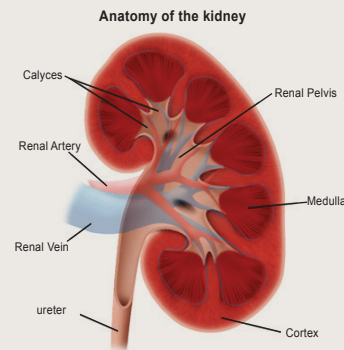
- Managing CKD tool
- CKD suspect identification
- CKD chart stickers
- GFR prediction calculator (pocket nomogram)

Staging Chronic Kidney Disease<sup>5</sup>

Stage	Severity	GFR Values	ICD-9-CM
Stage I		GFR ≥ 90 mL/min with kidney damage*	585.1
Stage II	Mild	GFR 60-89 mL/min with kidney damage*	585.2
Stage III	Moderate	GFR 30-59 mL/min	585.3
Stage IV	Severe	GFR 15-29 mL/min	585.4
Stage V	Kidney Failure	GFR < 15 mL/min	585.5
	ESRD	Requiring chronic dialysis or transplantation	585.6
CKD Unsp.		Chronic Kidney Disease, unspecified	585.9

CKD is defined as either kidney damage or GFR < 60mL/min/1.73m<sup>2</sup> for ≥ 3 months. \*Kidney damage is defined as pathologic abnormalities or markers of damage, including abnormalities in blood or urine tests or imaging studies.<sup>6</sup>

Note: Use additional code to identify kidney transplant status (V42.0), renal dialysis status (V45.11) or noncompliance with renal dialysis (V45.12), if applicable.<sup>7</sup>



### DOCUMENTATION TIPS<sup>5,7</sup>

**CKD:** The stage of CKD should be stated based on the documented clinical findings, including the Glomerular Filtration Rate (GFR).

**CKD and Diabetes:** There is no presumed linkage between diabetes and CKD. It must be implied (diabetic) or a causal relationship stated (due to diabetes).

**CKD and Hypertension:** ICD-9 assumes a relationship when a patient has both renal disease and hypertension (cause and effect link). Both conditions, chronic kidney disease (staged) and hypertension, must be documented.

**CKD, Hypertension and Heart Disease:** There is no presumed linkage between hypertension and heart disease. It must be implied (hypertensive) or a causal relationship stated (due to hypertension).

**Kidney Failure:** It is important to specify the type of kidney failure — acute or chronic — and the cause of the kidney failure, if known. If kidney failure is chronic, document the stage of the CKD.

<sup>1</sup> Chronic Kidney Disease (CKD) *National Kidney Foundation*. National Kidney Foundation. 10 July 2009. <<http://www.kidney.org/kidneydisease/ckd/index.cfm>>.

<sup>2</sup> CDC/Department of Health and Human Services, "Prevalence of Chronic Kidney Disease and Associated Risk Factors." *Morbidity and Mortality Weekly Report* 56(08)(2007):161-165. <<http://www.cdc.gov/mmwr/preview/mmwrhtml/mm5608a2.htm>>.

<sup>3</sup> "Kidney and Urologic Diseases Statistics for the United States." *National Kidney and Urologic Diseases Information Clearinghouse*. 18 Oct. 2010. Web. 18 Oct. 2010. <<http://kidney.niddk.nih.gov/kudiseases/pubs/kustats/index.htm>>.

<sup>4</sup> Ryan, T.P., et al., "Chronic Kidney Disease Prevalence and Rate of Diagnosis." *American Journal of Medicine* 120 (2007): 981-986.

<sup>5</sup> Ingenix, *Coders' Desk Reference For Diagnoses*. 2011. Alexandria, VA: Ingenix, 2010: 480-484.

<sup>6</sup> National Kidney Foundation, "KDOQI Clinical Practice Guidelines for Chronic Kidney Disease: Evaluation, Classification and Stratification." *American Journal of Kidney Disease* 39: 2002 supplement 1.

<sup>7</sup> World Health Organization, *Professional: ICD-9-CM for Physicians—Volumes 1 & 2*. 2011. Alexandria, VA: Ingenix, 2010, October. Print.